

GROW YOUR SOYBEAN PROFITS



WITH INSPECTIONS & MAINTENANCE

Thirteen may be an unlucky number to some people, but not to soybean farmers. That's because harvesting soybeans at 13% moisture levels results in increased profits. But to reach that mark, you need to keep your combine running. And that all starts with a **preseason inspection** from your local John Deere dealer. By inspecting your machine, our certified technicians can identify and **replace worn parts**, as well as detect other problems that could affect performance. Don't lose yield/dollars because of downtime. **Schedule your inspection today.**

PUT MORE MONEY IN YOUR POCKET WITH INSPECTIONS.



10% moisture
instead of 13%¹

CALCULATIONS
ARE BASED ON
US DOLLARS,
US BUSHEL WEIGHT,
AND US CROP
INSURANCE PRICE.

On a 50 bushel/acre
crop that equals

1.65



BUSHELS AN ACRE

With beans selling at
\$14.33/bushel that equals
a loss of \$23.64 an acre²

SHRINKAGE FROM THE DOWNTIME



PER DAY³ COULD EQUAL

\$3,546

LOSS PER DAY WHEN
HARVESTING 150 ACRES

HYPOTHETICAL EXAMPLE

If your combine isn't ready to run — and you're forced to harvest beans at 10% moisture instead of 13% — you are losing both bushels and income. On a 50 bushel/acre crop that amounts to 1.65 bushels an acre.⁴ With beans selling at \$14.33/ bushel that equals a loss of \$23.64 an acre. Shrinkage due to downtime could cost \$3,546 per day or more.

Average inspection costs:
\$12,000/per year

¹Elevator standard

²Soybean price is the Spring Insurance Price in March 2022

³Harvesting 150 acres per day

⁴Based on 2020 article from the Institute of Agriculture and Natural Resources at University of Nebraska-Lincoln

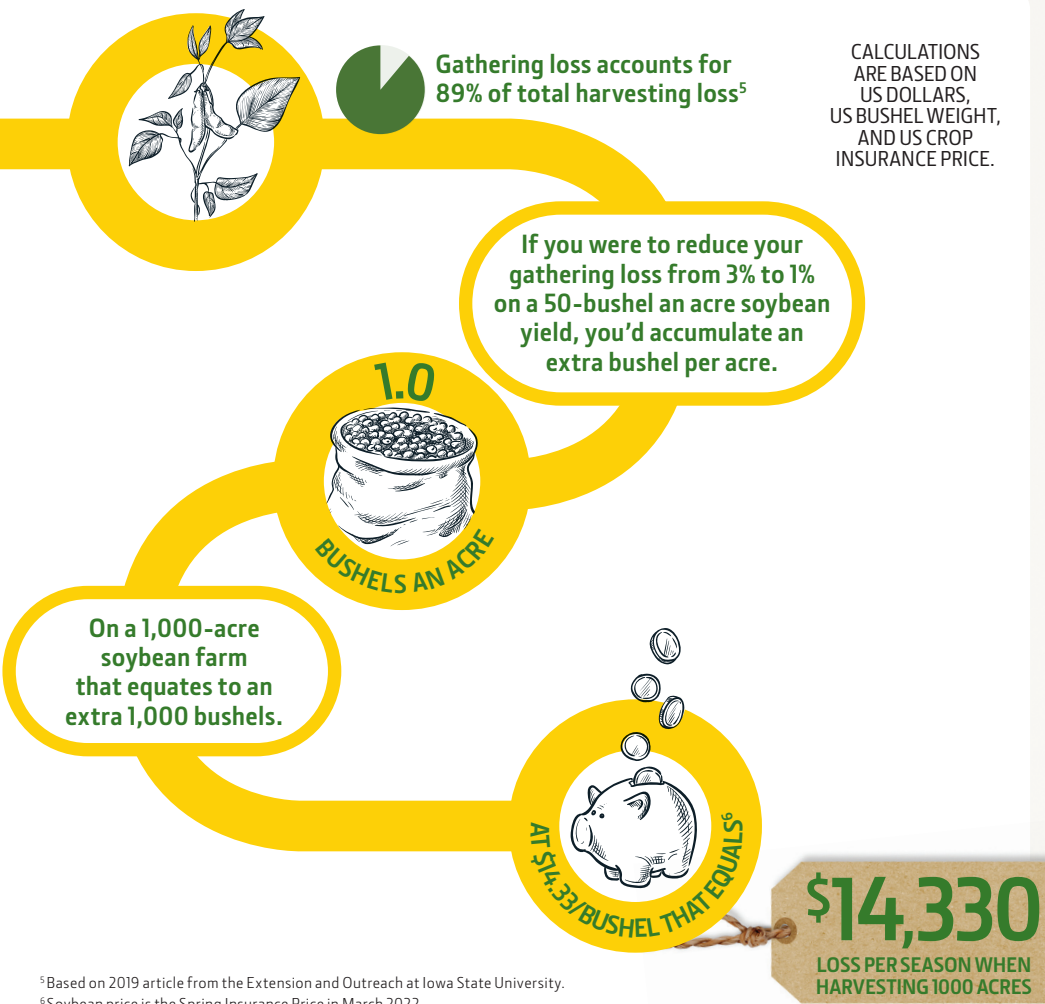


JOHN DEERE



Keep knife sections sharp and guards properly adjusted, and you'll land more soybeans in the bin. In fact, **regular cutterbar maintenance** is one of the key factors to **reduce gathering loss**. As the graphic below illustrates, you can significantly **improve your bottom line** by minimizing gathering losses through routine cutterbar self-maintenance – in addition to working with your local John Deere technician to properly adjust chains, belts, engine speed, reel ground speed, cutting heights and cylinders to boost yield and profits.

KEEP YOUR CUTTERBAR IN TOP-NOTCH SHAPE.



CALCULATIONS ARE BASED ON US DOLLARS, US BUSHEL WEIGHT, AND US CROP INSURANCE PRICE.

By minimizing gathering loss through cutterbar maintenance and other combine adjustments, you can make your soybean operation far more profitable. In fact, on a 1,000-acre farm, it could result in thousands of dollars.

Average self-maintenance cost on a 35-foot head
\$3,600

Includes: Standard Wear Guards, Course Tooth Sickle, and Hold Downs

⁵Based on 2019 article from the Extension and Outreach at Iowa State University.
⁶Soybean price is the Spring Insurance Price in March 2022